



# POLLUTION PREVENTION

## Is your site sorted?

All commercial sites have the potential to pollute the environment through a variety of business activities. This not only poses a threat to the environment but also human health and has associated financial costs.

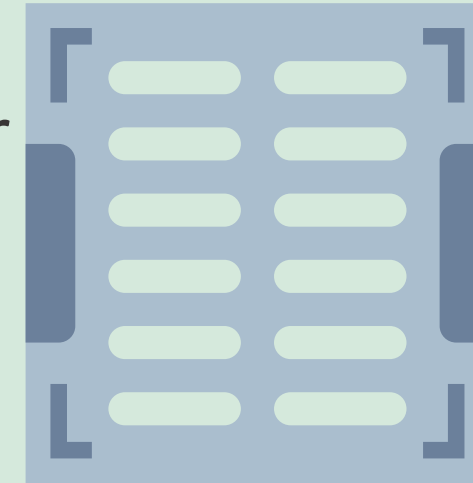
If a business pollutes, the owner could face an unlimited fine and/or a five year prison sentence. There is also the potential costs associated with the clean up and loss of company contracts.

This guide will get your business started managing and preventing pollution risks.

For more information visit [www.gov.uk/guidance/pollution-prevention-for-businesses](http://www.gov.uk/guidance/pollution-prevention-for-businesses)

## Know your drains

All contaminated water from business activities must go into foul drains or be removed by a licensed waste contractor - marking manholes & a drainage plan can help with this.



## Check your permissions

Check that you have permission from your water company to use foul drains for trade effluent.



## Keep water clean

Prevent contaminated waste water by reviewing your operations and opting for dry systems when possible.



## Safe storage of materials, products & waste

For all storage ensure you have a pollution incident response plan in the event of a leak, spill or fire. All waste stored should be secure to prevent any escaping or leaking into the environment.



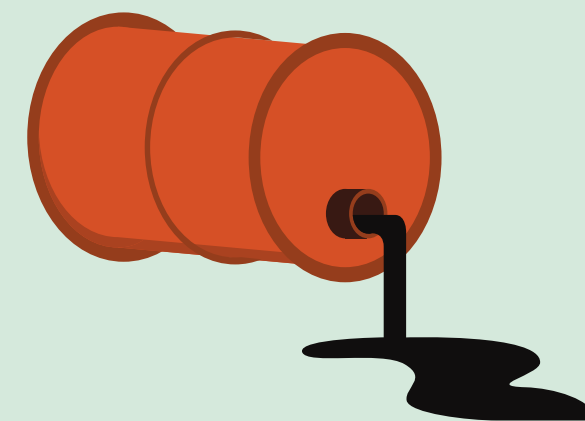
## Environmental Management System

To obtain an environmental permit you need to have an environmental management system (EMS). This will help you avoid pollution, manage any risks and act appropriately if an incident does occur.



## Spill kits at the ready

Have procedures in place for unloading and moving polluting substances. Having spill kits in high risk areas can help to manage pollution in the event of a spill.



## Construction & maintenance

You need permission from the Environment Agency when you start any works near a main river. You need to minimise and prevent risks for any works and follow your Duty of Care for all waste produced.

